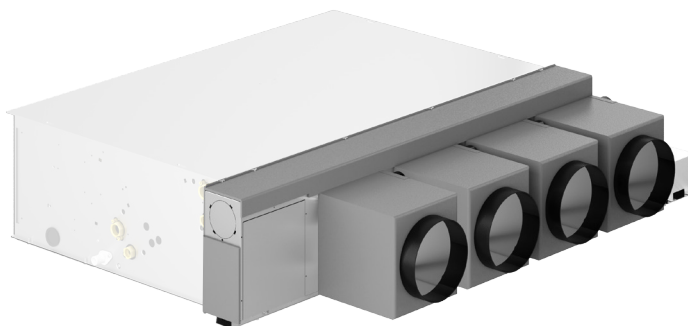


MZC

Plenum with motor-driven dampers

- Multi-zone plenum for controlling air capacity
- Available for channels on/off and inverter fan coils



DESCRIPTION

The plenum with motor-driven dampers is designed for residential and tertiary applications. It combines optimal ambient comfort with assured energy savings.

Modern plant increasingly require overall air conditioning using channelled systems. Thanks to the electronic control of the dampers, the MZC accessory regulates the room's comfort by adjusting the air flow to meet the actual requirements.

MZC is designed for use in combination with all fan coils with asynchronous or brushless motors and is pre-set to distribute exchange air.

FEATURES

Structure

- Galvanized sheet metal structure, insulated with self-extinguishing material.
- From 2 to 6 delivery outlets, depending on the model. Each outlet is fitted with a motorised damper, with the possibility - if required by the system - to add an MZCSM accessory outlet (possibility not available for all models - see the accessory compatibility table)
- Fresh air injection flange, supplied as standard, for connecting the MZC plenum to a heat recovery unit.
- Pre-setting for the installation of an additional air probe (accessory MZCSA) to control modulating or pressure-independent valves.
- Possibility to install the plenum even on the fan coil intake, using a flange (accessory MZCA)
- Reversible electrical box (right/left)
- Water probe supplied as standard, for the fan coil.

Regulation

- MZC is equipped with a zone thermostat VMHI to define the required temperature setting.
- The status of the dampers (open/closed) is adjusted on reaching the temperature set in each room.
- Management of up to 6 motorized dampers.
- Flow control for each damper (the maximum and minimum damper opening can be set for each outlet).

- Possibility to associate the control of several dampers with the request from the same zone thermostat (VMHI or WT10).
- For installations in which the dampers and room thermostats are uniquely associated, the dampers can be modulated in relation to the room thermostat requirements.
- "Suction plenum" function enabling
- MZC can control the valves that may be installed on the fan coil associated with it (On/Off, modulating or pressure-independent types), for 2- or 4-pipe systems
- Possibility to set the control unit parameters via the supervision serial port.

ACCESSORIES

Control panels

WR10: Two-channel wireless receiver for WT10.

WT10: Wireless thermostat.



n°1 as standard

VMF Components

VMF-VOC: Air quality detection accessory.

VMHI: The VMHI panel can be used as a user interface for VMF-E0X/E19/E19I thermostats, GLFxN/M or GLLxN grids, or as an interface for the MZC system. What determines the function to be performed by the user interface is determined by its correct parametrisation and by following the electrical connections between interface and thermostat or interface and plenum.

Installation accessories

MZCACV: Electrical system with relay interface board. Mandatory accessory on units where motor absorption exceeds 0.7 A. The relay interface board is supplied with a 2A fuse to protect the fan coil. If the fan coil absorbs more than 2A and up to 4A, the fuse inside must be replaced with a 4A fuse supplied.

MZCAC: Mandatory electrical system for connecting the MZC plenum with a fan coil fitted with an asynchronous motor.

MZCBC: Mandatory electrical system for connecting the MZC plenum with a fan coil fitted with a brushless motor.

MZCSM: Single module with motorized damper.

MZCA: Adapter flange for installing the Plenum even under fan coil suction.

MZCSA: Air probe for controlling modulating or pressure independent valves.

ACCESSORIES COMPATIBILITY

Control panels and dedicated accessories

| Accessory | MZC220 | MZC320 | MZC530 | MZC830 | MZC5040 | MZC7050 |
|-----------|--------|--------|--------|--------|---------|---------|
| WR10 | * | * | * | * | * | * |
| WT10 | * | * | * | * | * | * |

VMF system

| Accessory | MZC220 | MZC320 | MZC530 | MZC830 | MZC5040 | MZC7050 |
|-----------|--------|--------|--------|--------|---------|---------|
| VMF-VOC | * | * | * | * | * | * |
| VMHI | * | * | * | * | * | * |

Installation accessories

Relay interface board

| Accessory | MZC7050 | | | | | |
|-----------|---------|--|--|--|--|--|
| MZCACV | * | | | | | |

| Accessory | MZC220 | MZC320 | MZC530 | MZC830 | MZC5040 | MZC7050 |
|-----------|--------|--------|--------|--------|---------|---------|
| MZCAC | * | * | * | * | * | * |

Compulsory electrical plant

| Accessory | MZC220 | MZC320 | MZC530 | MZC830 | MZC5040 | MZC7050 |
|-----------|--------|--------|--------|--------|---------|---------|
| MZCBC | * | * | * | * | * | * |

Single module with damper

| Accessory | MZC320 | MZC530 | MZC830 | MZC5040 | MZC7050 |
|-----------|--------|--------|--------|---------|---------|
| MZCSM | * | * | * | * | * |

Adaptation flange

| Accessory | MZC220 | MZC320 | MZC530 | MZC830 |
|-----------|--------|--------|--------|--------|
| MZCA2 | * | | | |
| MZCA3 | | * | | |
| MZCA5 | | | * | |
| MZCA8 | | | | * |

Air temperature probe

| Accessory | MZC220 | MZC320 | MZC530 | MZC830 | MZC5040 | MZC7050 |
|-----------|--------|--------|--------|--------|---------|---------|
| MZCSA | * | * | * | * | * | * |

COMPATIBILITY OF MZC PLENUMS WITH AERMEC FAN COILS

Plenum with motorised dampers - FCZ - PO

| Model | Ver | 100 | 101 | 102 | 150 | 200 | 201 | 202 | 250 | 300 | 301 | 302 | 350 | 400 | 401 | 402 | 450 | 500 | 501 | 502 | 550 |
|--------|--------|-----|-----|-----|-----|-----|-----|-----|-----|-----|-----|-----|-----|-----|-----|-----|-----|-----|-----|-----|-----|
| MZC220 | PO,POR | | | | | * | * | * | * | | | | | | | | | | | | |
| MZC320 | PO,POR | | | | | | | | | * | * | * | * | | | | | | | | |
| MZC530 | PO,POR | | | | | | | | | | | | | * | * | * | * | * | * | * | * |

| Model | Ver | 600 | 601 | 602 | 650 | 700 | 701 | 702 | 750 | 800 | 801 | 802 | 850 | 900 | 901 | 950 | 1000 | 1001 |
|--------|--------|-----|-----|-----|-----|-----|-----|-----|-----|-----|-----|-----|-----|-----|-----|-----|------|------|
| MZC830 | PO,POR | * | * | * | * | * | * | * | * | * | * | * | * | * | * | * | * | * |

Plenum with motorised dampers - FCZI - P

| Model | Ver | 200 | 201 | 202 | 250 | 300 | 301 | 302 | 350 | 400 | 401 | 402 | 450 | 500 | 501 | 502 | 550 | 700 | 701 | 702 | 750 | 900 | 901 | 950 |
|--------|------|-----|-----|-----|-----|-----|-----|-----|-----|-----|-----|-----|-----|-----|-----|-----|-----|-----|-----|-----|-----|-----|-----|-----|
| MZC220 | P,PR | * | * | * | * | | | | | | | | | | | | | | | | | | | |
| MZC320 | P,PR | | | | | * | * | * | * | | | | | | | | | | | | | | | |
| MZC530 | P,PR | | | | | | | | | * | * | * | * | * | * | * | * | | | | | | | |
| MZC830 | P,PR | | | | | | | | | | | | | | | | | * | * | * | * | * | * | * |

Plenum with motorised dampers - VED 030-340

| Accessory | VED030 | VED040 | VED130 | VED140 | VED230 | VED240 | VED330 | VED340 |
|-----------|--------|--------|--------|--------|--------|--------|--------|--------|
| MZC220 | * | * | | | | | | |
| MZC320 | | | * | * | | | | |
| MZC530 | | | | | * | * | | |
| MZC830 | | | | | | | * | * |

Plenum with motorised dampers - VED 430-741

| Accessory | VED430 | VED440 | VED530 | VED540 | VED630 | VED640 | VED730 | VED740 |
|-----------|--------|--------|--------|--------|--------|--------|--------|--------|
| MZC5040 | . | . | . | . | | | | |
| MZC7050 | | | | | . | . | . | . |
| Accessory | VED432 | VED441 | VED532 | VED541 | VED632 | VED641 | VED732 | VED741 |
| MZC5040 | . | . | . | . | | | | |
| MZC7050 | | | | | . | . | . | . |

Plenum with motorised dampers - VED 030I-340I

| Accessory | VED030I | VED040I | VED130I | VED140I | VED230I | VED240I | VED330I | VED340I |
|-----------|---------|---------|---------|---------|---------|---------|---------|---------|
| MZC220 | . | . | | | | | | |
| MZC320 | | | . | . | | | | |
| MZC530 | | | | | . | . | | |
| MZC830 | | | | | | | . | . |

Plenum with motorised dampers - VED 530I-741I

| Accessory | VED530I | VED540I | VED730I | VED740I |
|-----------|---------|---------|---------|---------|
| MZC5040 | . | . | | |
| MZC7050 | | | . | . |
| Accessory | VED532I | VED541I | VED732I | VED741I |
| MZC5040 | . | . | | |
| MZC7050 | | | . | . |

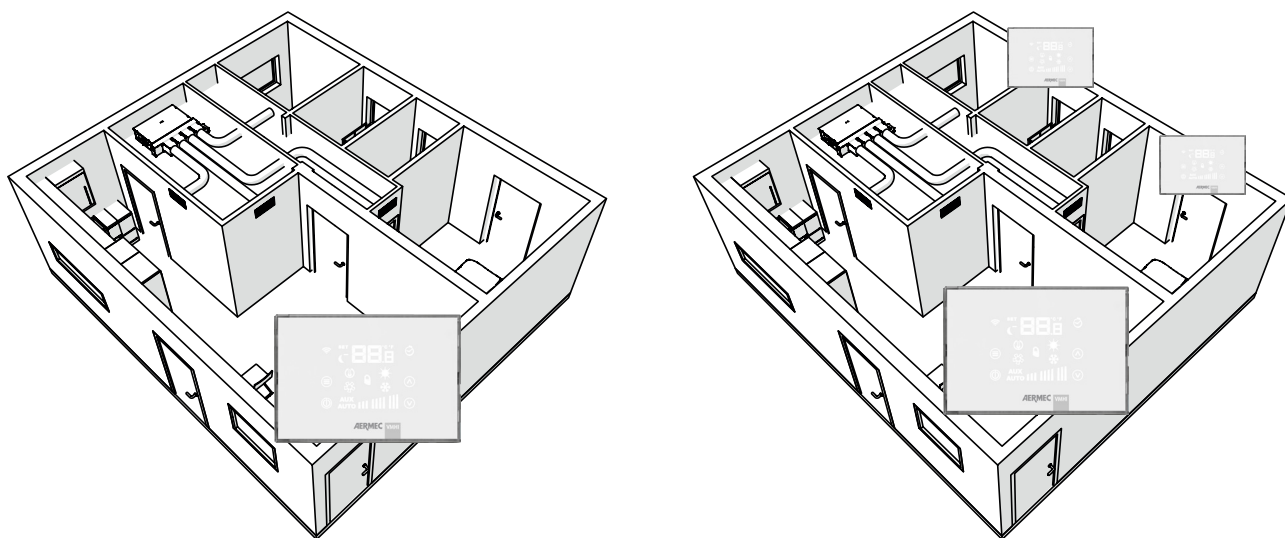
Plenum with motor-driven dampers - VES 030-340

| Accessory | VES030 | VES040 | VES130 | VES140 | VES230 | VES240 | VES330 | VES340 |
|-----------|--------|--------|--------|--------|--------|--------|--------|--------|
| MZC220 | . | . | | | | | | |
| MZC320 | | | . | . | | | | |
| MZC530 | | | | | . | . | | |
| MZC830 | | | | | | | . | . |

Plenum with motor-driven dampers - VES 030I-340I

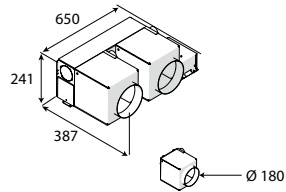
| Accessory | VES030I | VES040I | VES130I | VES140I | VES230I | VES240I | VES330I | VES340I |
|-----------|---------|---------|---------|---------|---------|---------|---------|---------|
| MZC220 | . | . | | | | | | |
| MZC320 | | | . | . | | | | |
| MZC530 | | | | | . | . | | |
| MZC830 | | | | | | | . | . |

SYSTEM SOLUTIONS

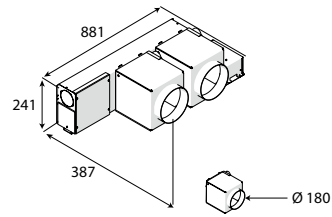


DIMENSIONS

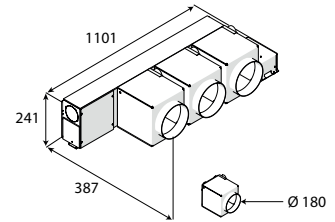
MZC220



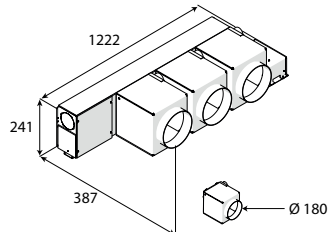
MZC320



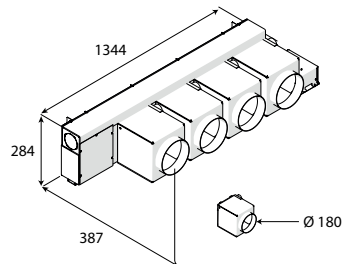
MZC530



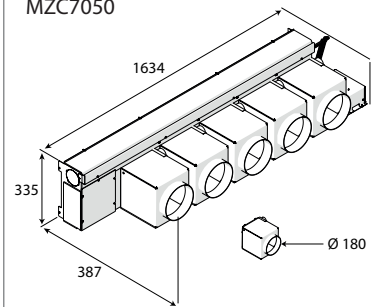
MZC830



MZC5040



MZC7050



Aermec reserves the right to make any modifications deemed necessary.
All data is subject to change without notice. Aermec does not assume
responsibility or liability for errors or omissions.

Aermec S.p.A.
Via Roma, 996 - 37040 Bevilacqua (VR) - Italia
Tel. 0442633111 - Telefax 044293577
www.aermec.com