

CSE

Remote condenser

Cooling capacity 3 ÷ 650 kW

- Simple to use and install
- Wide range of powers
- Easy to handle and transport
- Can be installed both horizontally and vertically



GENERAL FEATURES

- Simple to use and install;
- Excellent value for money;
- Easy to handle and transport;
- Up to 3 units can be stacked depending on the model (to be requested at time of order);

FEATURES

Structure

- They are designed for outdoor installation and therefore manufactured with technologies and materials that guarantee resistance to atmospheric agents;
- The version with polyurethane resin pre-painted louvers is also available for greater resistance to corrosion in aggressive environments;
- All coils are tested with Helium (He₂) which ensures the absence of leaks;
- The shoulders of the coils are integrated into the structure and designed to avoid any pipe breakage due to vibrations related to transport or functioning;
- Copper collectors with welded connections closed to prevent impurities and moisture from getting into the circuits.

Fans

Latest generation axial fans all compliant with ErP regulation and IP54. **All the machines are supplied with wired and tested fans, the following diameters of fans are available:**

- Ø350 Single phase (EC);
- Ø500 single-phase or three-phase (AC with "Y" STAR or "D" TRIANGLE EC electrical connection);
- Ø800 three-phase (AC with "Y" STAR or "D" TRIANGLE EC electrical connection);
- Ø1000 three-phase (AC with "Y" STAR or "D" TRIANGLE EC electrical connection).

There are different noise levels, depending on the fan diameter:

- Standard (B);
- Silenced (S);

- Super silent (E).

CONTROL

The electrical panel with terminal board or with adjustment is always present.

For space reasons, the models with 350 mm diameter fans feature a junction box.

The regulators used are of high efficiency and low consumption, the types of adjustments available are:

- Phase cut for AC fans
- With electronic processor for EC versions

ACCESSORIES

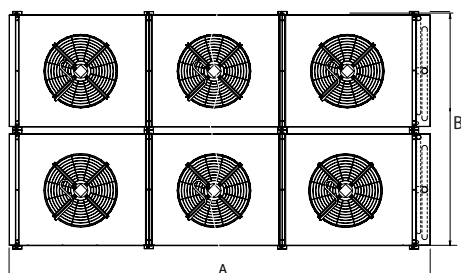
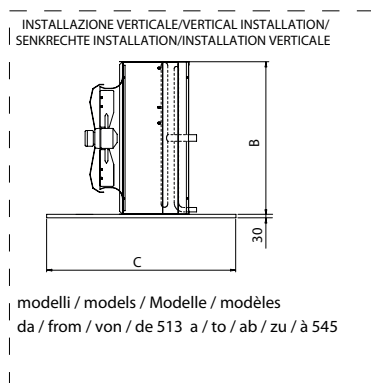
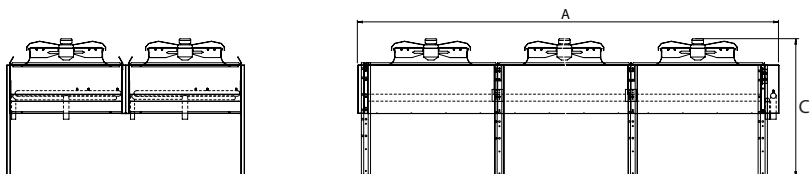
Several accessories are available:

1. Anti-vibration supports;
2. Coil connection kit;
3. Additional disconnectors for each motor;
4. Remote switch-on/switch-off management kit;
5. Resistance kit (if temperature ≤ - 20°C);
6. MODBUS kit (only on units with three-phase connection);
7. Axitop (only for 800 mm diameter fans).

PERFORMANCE SPECIFICATIONS

- For combinations with the evaporating units contact the headquarters.

DIMENSIONS



CSE fans diameter Ø 350

		CSE 3023	CSE 3024	CSE 3033	CSE 3034
Dimensions and weights					
A	mm	1310	1310	1860	1860
B	mm	620	620	620	620
C	mm	840	840	840	840
Weights					
Empty weight	kg	35	39	48	54

CSE fans diameter Ø 500

		CSE 5013	CSE 5014	CSE 5022	CSE 5023	CSE 5033	CSE 5034	CSE 5043	CSE 5044	CSE 5063	CSE 5064	CSE 5083	CSE 5084
Dimensions and weights													
A	mm	1400	1400	2345	2345	3290	3290	4230	4230	3290	3290	4230	4230
B	mm	833	833	833	833	833	833	833	833	1666	1666	1666	1666
C	mm	1080	1080	1080	1080	1080	1080	1080	1080	1080	1080	1080	1080
Weights													
Empty weight	kg	70	74	107	116	162	175	206	224	324	350	412	448

CSE fans diameter Ø 800

		CSE 8013	CSE 8014	CSE 8023	CSE 8024	CSE 8033	CSE 8034	CSE 8043	CSE 8044	CSE 8063	CSE 8064
Dimensions and weights											
A	mm	1920	1920	3600	3600	5260	5260	3600	3600	5260	5260
B	mm	1240	1240	1240	1240	1240	1240	2390	2390	2390	2390
C	mm	1385	1385	1385	1385	1385	1385	1385	1385	1385	1385
Weights											
Empty weight	kg	169	179	331	356	487	525	642	692	954	1030

CSE fans diameter Ø 1000

		CSE 1013	CSE 1014	CSE 1023	CSE 1024	CSE 1033	CSE 1034	CSE 1043	CSE 1044	CSE 1063	CSE 1064	CSE 1083	CSE 1084
Dimensions and weights													
A	mm	2560	2560	4860	4860	7170	7170	9460	9460	7170	7170	9460	9460
B	mm	1260	1260	1260	1260	1260	1260	1260	1260	2430	2430	2430	2430
C	mm	1750	1750	1750	1750	1750	1750	1750	1750	1750	1750	1750	1750
Weights													
Empty weight	kg	229	247	429	467	725	772	925	990	1508	1602	1930	2060

Aermec reserves the right to make any modifications deemed necessary.
All data is subject to change without notice. Aermec does not assume
responsibility or liability for errors or omissions.

Aermec S.p.A.
Via Roma, 996 - 37040 Bevilacqua (VR) - Italia
Tel. 0442633111 - Telefax 044293577
www.aermec.com